

CSE 265: System and Network Administration

- Printing and print services
 - Printing policies and architecture
 - Printing terms
 - Types of printers
 - LPD, LPRng, CUPS
 - Adding a printer
 - Common printing software



Print services

- People **depend** on print services
 - for contracts
 - for proofreading
 - for quizzes
 - for reading long material that is less pleasant to read on-screen
- Print is a utility
 - It should ***always*** work



Where should printers be located?

- Some want a printer on their own desk
 - Very convenient but expensive
- Some want to be able to print to any printer, no matter where it is
 - Flexible, able to borrow specialty printers as needed
- Finance people want to centralize everything
 - A single high-speed printer, single high-quality printer, and one color printer per building (most cost-effective)
- Others want to charge every expense
 - Regardless of how much is out there, those who use it, pay for it



Real world

- People need to be able to print to any printer they have permission to use
- Centralized printing services can save money
 - Ten people who might otherwise buy slow, low-quality personal printers for \$50-150, without support contracts, can buy a single high-quality, fast shared printer with long-term maintenance
 - Plus the sysadmin only has to support one printer driver/printer rather than 10

Print architecture

- How centralized will printing be?
 - How many people will share a printer for general printing?
 - Who qualifies for a personal printer?
 - How will they be networked?
 - Networked printers require a central print-spool
 - Also provides access control
 - How will they be maintained?
 - How will they be paid for?

Print architecture (cont.)

- Who orders supplies and resupplies the printers?
 - Are the printers re-supplied when they are out (and users complain), or does someone visit them regularly?
- What kinds of printing technologies will be supported?
 - Postscript/PCL
 - Duplex printing
 - Laser vs. InkJet
 - LPD over IP/NT's SMB/AppleTalk/USB or parallel, etc.
- How will the printers be named?
 - You don't want people printing to the wrong building or wrong country (!) by mistake

Print system architecture

- Peer-to-peer
 - All hosts spool jobs directly to the destination printer
 - Simplest, but all clients must know current printer IP/name
 - Cannot route around broken printers
 - Limited by printer spool memory
- Central funnel
 - Hosts send print jobs to a central server which distributes
 - Can convert formats
 - Can collect per-page billing
 - Can intelligently select printers
 - Single place for printer drivers

Printing terms

- spooler
- PDL
- bitmap
- RIP
- filters
- PostScript

Printing terms

- spooler
 - Daemon that receives print jobs, stores, prioritizes, and sends them sequentially to be printed
- PDL
 - Page Description Language, usually device and resolution independent
 - PostScript, PCL, PDF
- bitmap
 - JPEG, TIFF, GIF
- RIP
 - Raster image processor
 - Accepts PDL input, generates bitmap appropriate for a particular device
- filters
 - Modify print jobs on their way to a printer
- PostScript
 - Most common PDL – also a full programming language

Types of printers

- Classified by connection interface
 - Serial and parallel printers
 - USB faster and the default today for personal printers
 - Network printers
 - Contain network interfaces
 - Accept jobs via one or more printing protocols
 - including via LPD, CIFS, IPP, HP JetDirect
- Classified by type of data
 - PostScript is well-supported under Linux/UNIX
 - Non-postscript printers require special software to convert to unique PDL (vendor supplied, or ghostscript)

LPD, LPRng, CUPS

Print Server Packages

- LPD is the old standard
 - Not found on current distributions
- LPRng
 - Designed for backwards compatibility with Berkeley and System V printing systems
 - Was common ages ago (default for Red Hat 7.3), but is now replaced by...
- CUPS – Common UNIX Printing System
 - Standard on modern distributions (our focus)

client utility: lpr

- Invoked to submit a print job
 - typically use *-Pprinter* to choose which printer, default printer used when none is selected
- ```
% lpr -Phowler-lw -#2 thesis.ps
```
- All apps use it (even things like *enscript* and *Acrobat*)
- Checks */etc/printcap* for info about printer
- Under LPD it creates two files in */var/spool/lpd/printername*
  - One is a control file with handling info (like username)
  - Second is data file
- Then tells the print daemon about file

# lpq and lprm

---

- `lpq -Pprinter`
  - Examines the queue of jobs waiting to be printed on the particular printer
  - Shows the job id as well as owner, filename, size
- `lprm jobid`
  - Deletes one or more jobs, erasing the stored data files
  - Can delete with job id, or by username
  - Typically must be on machine where job was generated and must be same user (or root)
- Both work across a network (most of the time)

# lpc/lpadmin: make admin changes

---

- Can be used to
  - Enable or disable queuing for a printer
  - Enable or disable printing on a printer
  - Remove all jobs from a printer queue
  - Move a job to the top of a printer's queue
  - Start, stop, or restart the lpd daemon
  - Get printer status information
- lpadmin much more powerful

# filters

---

- Filters are typically shell scripts that run on spooled data before sending to the printer
- Can
  - Fix various non-printing sequences
  - Write out accounting records
  - Convert to a printer-supported PDL
  - Add banner pages

# CUPS

---

- Common UNIX Printing System
  - Latest rewrite of the printing system
- Also supports secure printing (SSL, etc.)
- Implements IPP: Internet Printing Protocol (HTTP-based)
- Supports load-balancing across a class of printers
- Supports automatic network configuration
- Standard in most Linux distributions



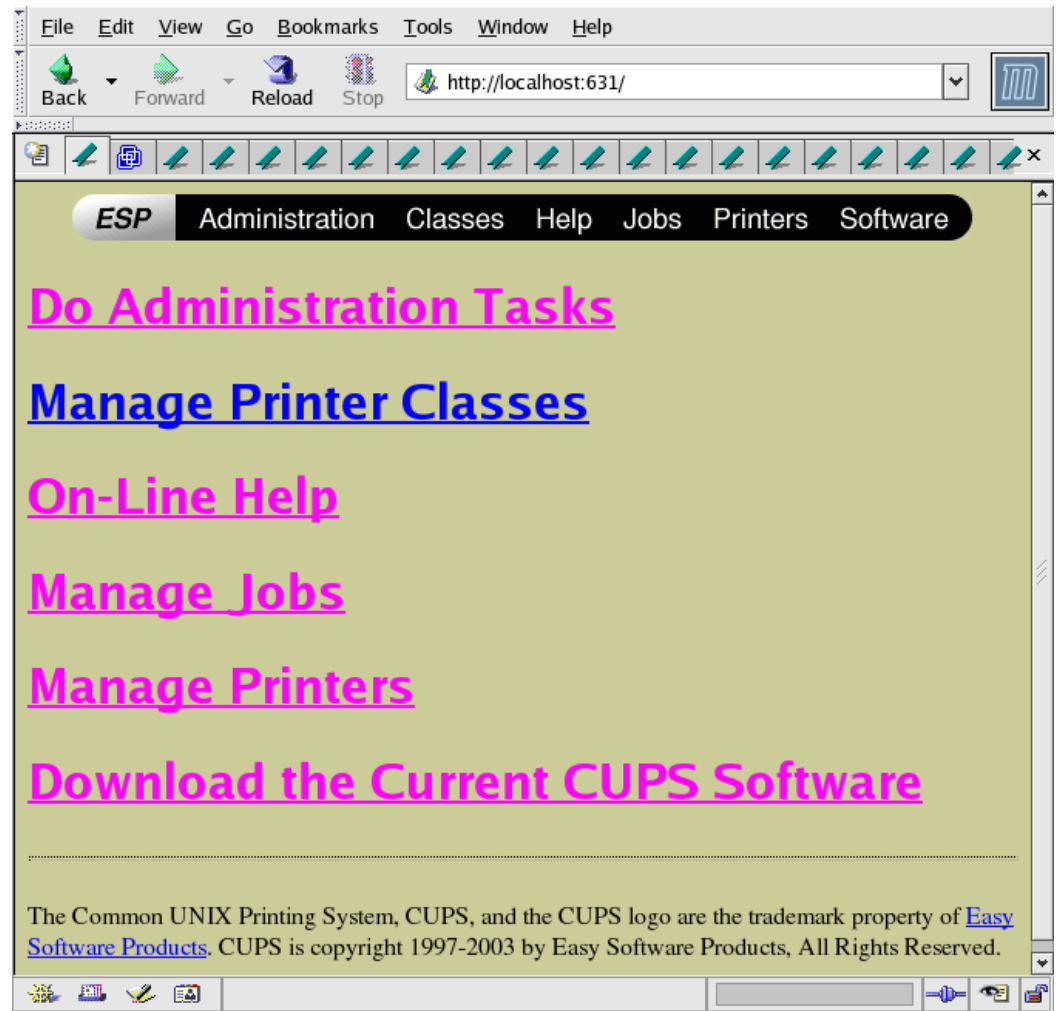
# Adding a printer in CUPS

---

- From command line:
  - `lpadmin -p fezmo -E -v socket://192.168.0.12 -m laserjet.ppd`
  - `lpadmin -p groucho -E -v parallel:/dev/lp0 -m pxlcolor.ppd`
- From browser: <http://localhost:631/admin>
- From Red Hat/Fedora
  - Command line: `system-config-printer`
  - GUI: System->Administration->Printing

# CUPS Administration

- Provides a Web-based interface for administration
  - <http://localhost:631/>



# HP Web Interface, Protocols

The image displays two screenshots of the HP LaserJet 2200 web interface, accessed via a browser at `http://hp.local.cse.lehigh.edu/`.

**Left Screenshot: Device Information**

- hp / 192.168.0.250
- HP LaserJet 2200
- Home Networking
- Device Info Select Language
- Other Links: [Help](#), [Support](#), [HP Home](#)
- Device: HP LaserJet 2200
- Page Count: 37334
- Control Panel: READY
- Host Name: hp
- System Up Time: 47days,19:47:26
- System Contact: Brian Davison - `davison(at)cse.lehigh.edu`
- System Location: PL251
- HP JetDirect: J4169A
- Firmware Version: L.21.11
- IP Address: 192.168.0.250
- Hardware Address: 0001E64075D5
- Admin Password: <Set>
- Refresh

**Right Screenshot: Other Settings**

- hp / 192.168.0.250
- HP LaserJet 2200
- Home Networking
- Configuration: Network Settings, Select Language, Support Info, Other Settings
- Security: Admin Password, Access Control
- Diagnostics: Network Statistics, Protocol Info, Test Page, Refresh Rate
- Other Links: [Help](#), [Support](#), [HP Home](#)
- Enabled Features:
  - SLP Config
  - 9100 Printing
  - LPD Printing
  - Telnet Config
  - FTP Printing
  - IPP Printing
- DNS Server: 192.168.0.1
- Syslog Facility: LPR
- Dynamic Raw Port Setting:
  - Dynamic Raw Port 1: [ ]
  - Dynamic Raw Port 2: [ ]
- Apply Cancel

# Other common printing-related software

---

- ghostscript
  - Free PostScript interpreter to view PS files onscreen
  - Also used to drive raster devices (cheap printers) by rendering the PS in the format needed
  - Powers front-ends like gv, ggv, KGhostView
- mpage
  - Re-formats text or PostScript to have multiple logical pages per physical page
- enscript
  - Similar to mpage, also has nice page headers, many options (installed on sunlab machines)

# Viewing print files

---

- Ghostscript
  - Front-ends like gv, ggv, KghostView
- Acrobat reader (acroread)
- evince
- xpdf
- display (ImageMagick)

# Resources

---

- <http://www.linuxfoundation.org/collaborate/workgroups/openprinting>
  - Successor to [linux-printing.org](http://linux-printing.org)
- <http://www.cups.org/>
  - And if CUPS is installed, <http://localhost:631/>
- <http://www.lprng.com/>